

Modern Tech 3550



BETTER



Door: Ltd Lifetime



Hardware: 3 yr

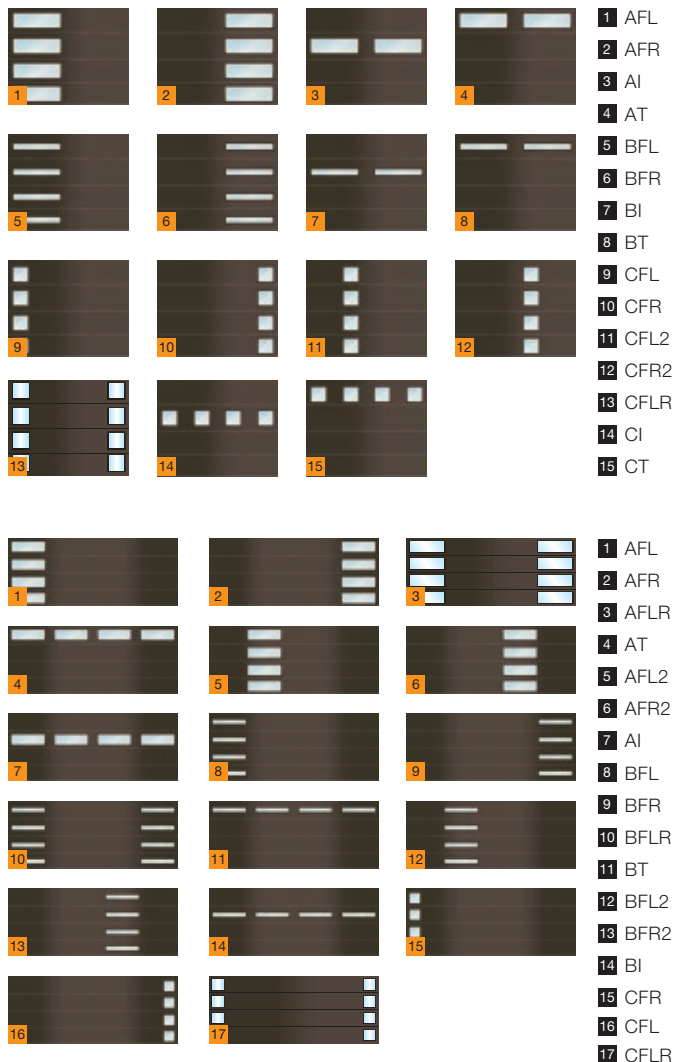


Springs: 3 yr

- **R-10.4** Thermal Rating
- 24 ga. Steel
- 2" Sections
- 5 Colors
- 40+ Designs

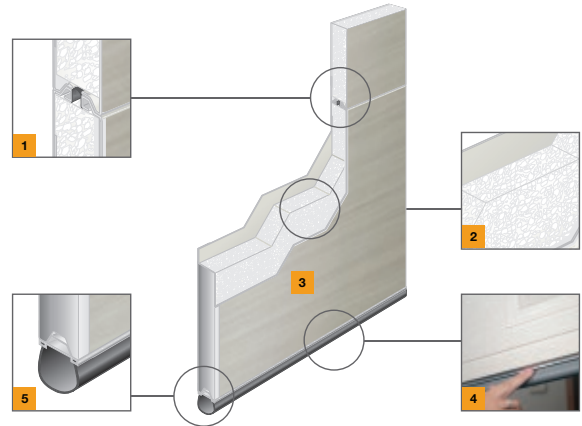
Thermal Rating	<div></div>	<div></div>	<div></div>	<div></div>	<div></div>
Customizations	<div></div>	<div></div>	<div></div>	<div></div>	<div></div>
Low Maintenance	<div></div>	<div></div>	<div></div>	<div></div>	<div></div>
Luxury Level	<div></div>	<div></div>	<div></div>	<div></div>	<div></div>

PANEL DESIGN OPTIONS



SAFETY, DURABILITY, EFFICIENCY

Black satin, dark bronze, brushed nickel, and white never looked so good. These contemporary panel colors are standard on the Modern Tech 3550 and have the refined appearance of aluminum though are smooth, heavy-duty 24-gauge steel.



Tongue & Groove Section Joints

Precisely designed thermally broken section joints reduce air infiltration and create weathertight seal.

Aluminum Retainer

Hörmann minimizes floor corrosion by utilizing an aluminum bottom seal retainer that never rusts and is more durable than brittle plastic retainers.

Sandwich Construction

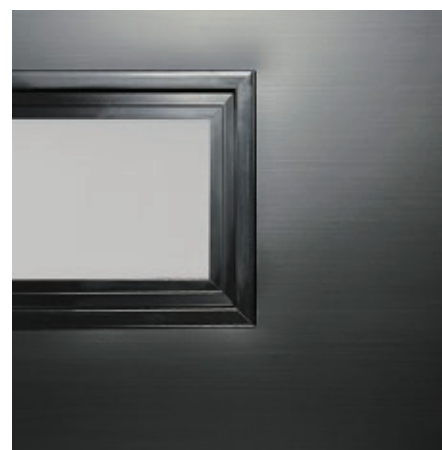
3-layer steel front and back construction with insulating polystyrene core increases energy savings.

Bottom Weather Seal

Keeps out wind, rain, debris and other elements for added energy savings.

Smooth Steel Texture

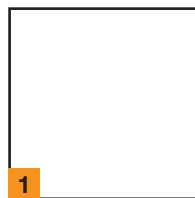
Heavy-duty 24 gauge steel exterior skin comes in four attractive colors.



Section Detail

Modern Tech panels are produced in smooth heavy-duty 24 gauge exterior skin. All doors are customizable with 46 panel and window combinations and include high quality painted aluminum frame with clear annealed glass.

COLOR OPTIONS



1



2

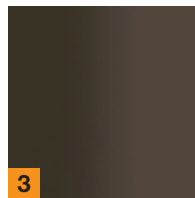
1 White

2 Black Satin

3 Dark Bronze

4 Brushed Nickel

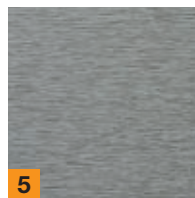
5 Graphite



3



4



5

GLASS OPTIONS



1



2



3



4



5



6



7



8

*Glass Options are available in both uninsulated or insulated variants



1 Clear

2 Bronze

3 Satin Etch

4 Gluechip

5 Privacy

6 Mistlite

7 Obscure

8 Gray

USA

Toll Free: 800.365.3667
Email: info@hormann.us
Website: hormann.us

Canada

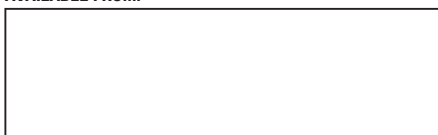
Toll Free: 866.792.9968
Email: info@hormann.ca
Website: hormann.ca

Mexico

Toll Free: 52 (81) 8308 7481
Email: info@hormann.com.mx
Website: hormann.mx



AVAILABLE FROM:



Follow us on social media



We reserve the right to change specifications without notice. ©Hörmann (Issue 8.2024)